

**INVERTER MULTI  
AIR CONDITIONER  
DUCT type**

**SERVICE  
MANUAL**



**Models**

**Indoor unit**

**Outdoor unit**

ARY12LUAD	}	AOY30LMAW4
ARY14LUAD		
ARY18LUAD		
ARY22LUAD		

**CONTENTS**

SPECIFICATIONS .....	1
OUTLINE AND DIMENSIONS .....	3
REFRIGERANT SYSTEM DIAGRAM .....	5
CIRCUIT DIAGRAM .....	6
INDOOR PCB CIRCUIT DIAGRAM .....	8
OUTDOOR PCB CIRCUIT DIAGRAM ....	9
ERROR CONTENTS .....	12
DISASSEMBLY ILLUSTRATION .....	15
PARTS LIST .....	23



**Большая библиотека технической документации**

<https://splitsystema48.ru/instrukcii-po-ekspluatácii-kondicionerov.html>

**каталоги, инструкции, сервисные мануалы, схемы.**

## SPECIFICATIONS

### INDOOR UNIT

TYPE	Cool and Heat			
MODEL NAME	<b>ARY12LUAD</b>	<b>ARY14LUAD</b>	<b>ARY18LUAD</b>	<b>ARY22LUAD</b>

### ELECTRICAL DATA

POWER SOURCE	(V)	230		
FREQUENCY	(Hz)	50		
AIR CIRCULATION-Hi	(m <sup>3</sup> /hr)	600	800	1,040

### FAN MOTOR

POWER SOURCE	(V)	230			
DISCRIMINATION		MFA-18NTT			
HI-SPEED	(r.p.m.)	750	1,000	1,040	1,270
MED-SPEED	(r.p.m.)	680	860	890	1,050
LO-SPEED	(r.p.m.)	610	720	750	800

DIMENSIONS	H x W x D (mm)	217 x 953 x 595		
WEIGHT	GROSS / NET (kg)	29 / 25		30 / 26

## OUTDOOR UNIT

TYPE	Colling & Heating	
MODEL NAME	<b>AOY30LMAW4</b>	
COOLING CAPACITY	(kW)	8.0
HEATING CAPACITY	(kW)	9.6

### ELECTRICAL SPECIFICATIONS

POWER SUPPLY	(V)	(220) - 230 - (240)	
FREQUENCY	(Hz)	50	
RUNNING CURRENT	(A)	COOLING	9.7
		HEATING	10.5
INPUT	(kW)	COOLING	2.22
		HEATING	2.40
EER	(kW/kW)	COOLING	3.60
		HEATING	4.00
AIR CIRCULATION - Hi	(m <sup>3</sup> /hr)	3,300	

### COMPRESSOR

TYPE	Hermetic type, Inverter, 4 poles, 3-phase, DC motor, Twin Rotary		
DISCRIMINATION	TNB220FPBM9		
REFRIGERANT	R410	(g)	3,300

### FAN MOTOR

DISCRIMINATION	MFE-60PO	
HI-SPEED	(r.p.m.)	820

DIMENSIONS	H x W x D	(mm)	830 x 900 x 330
WEIGHT	NET / GROSS	(kg)	68 / 78

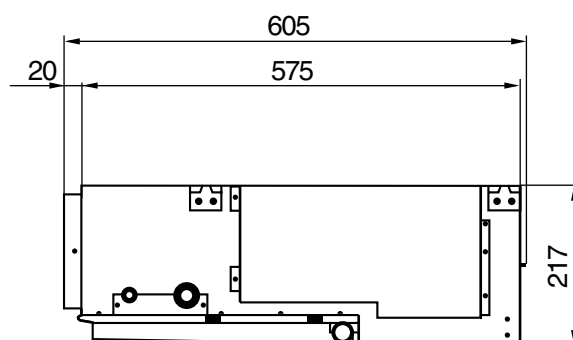
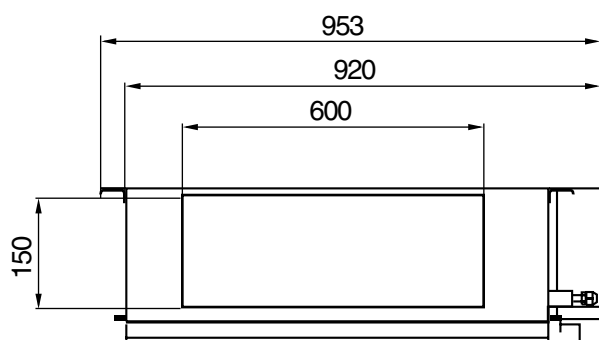
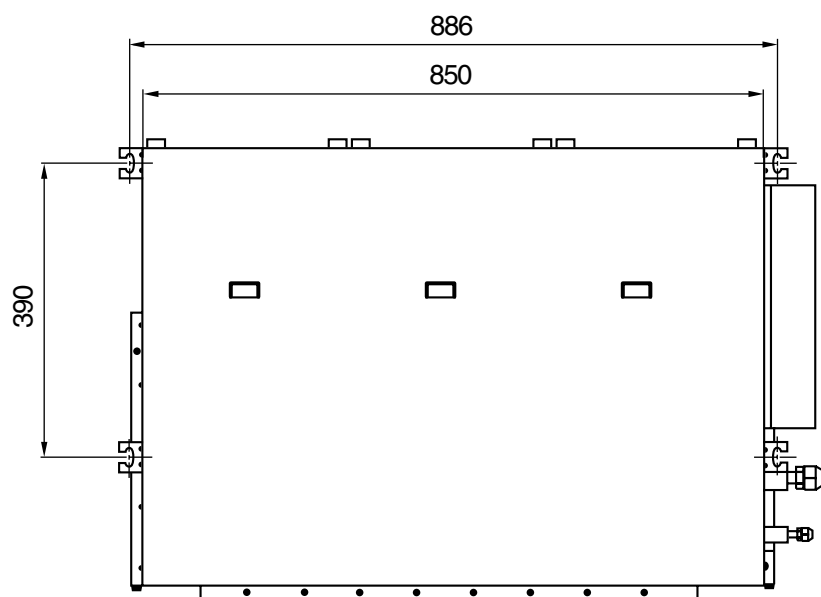
### REFRIGERANT CHARGE (R410A)

FULL CHARGE AMOUNT	Total Pipe Length	50.0 m	3,300 g
		60.0 m	3,550 g
		70.0 m	3,800 g
ADDITIONAL CHARGE			25 g / m
CHARGELESS			50 m
MAX PIPE LENGTH (each unit)			25 m
MAX PIPE LENGTH (total)			70 m
MAX ELEVATION (between indoor units)			10 m
MAX ELEVATION (between indoor and outdoor units)			10 m
MIN. PIPE LENGTH (each unit)			5 m

# OUTLINE AND DIMENSIONS

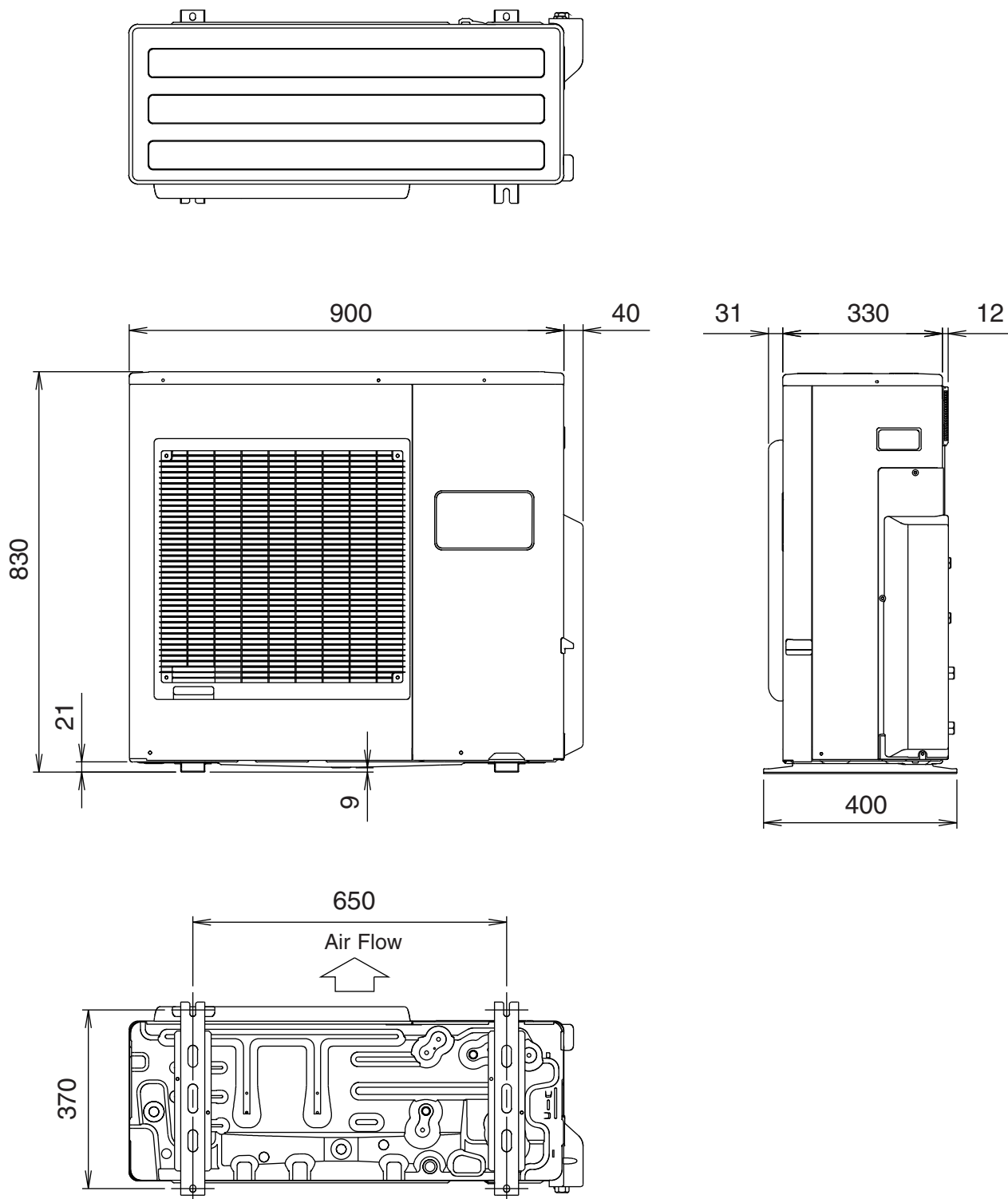
Unit : mm

Models : ARY12LUAD  
ARY14LUAD  
ARY18LUAD  
ARY22LUAD



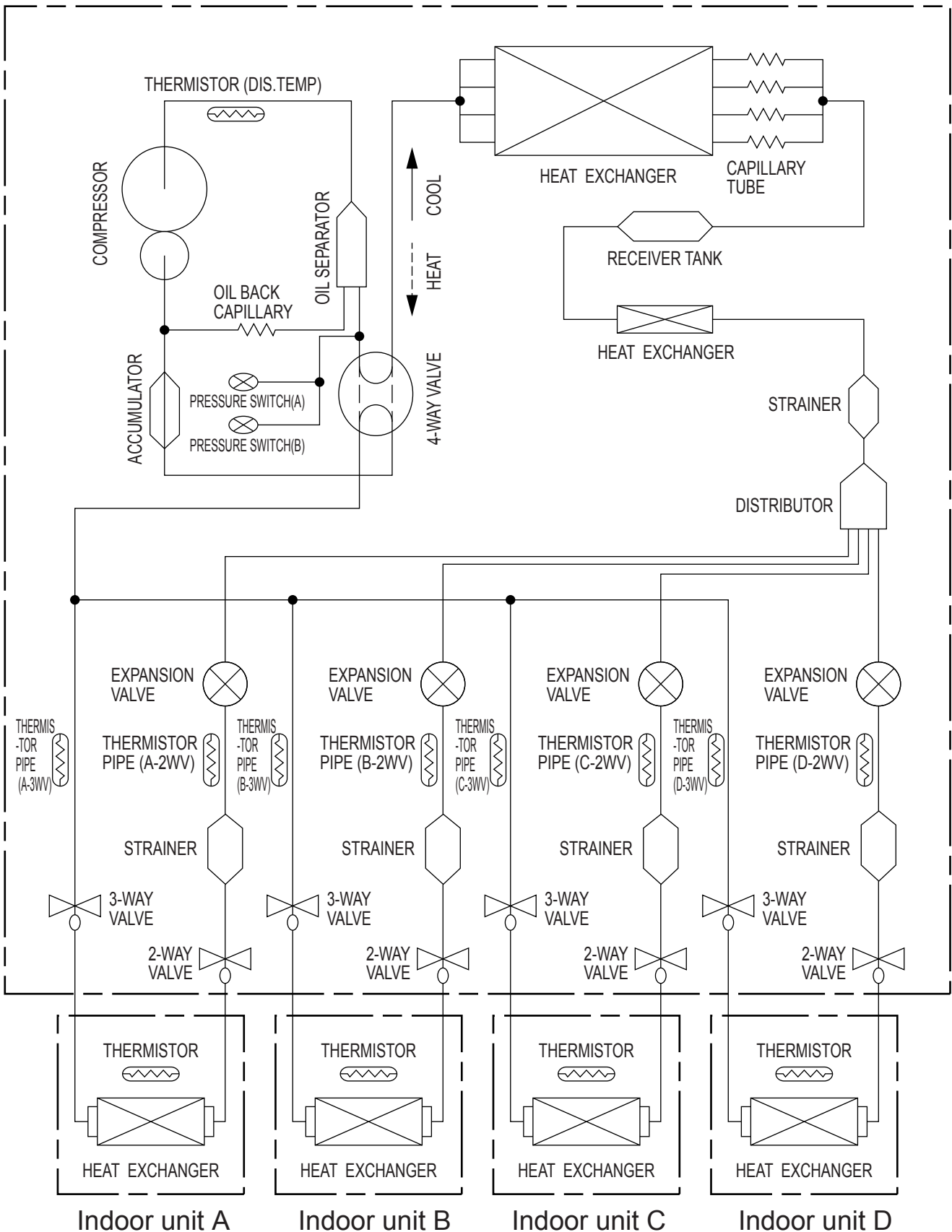
# OUTDOOR UNIT (Unit : mm)

**Model : AOY30LMAW4**



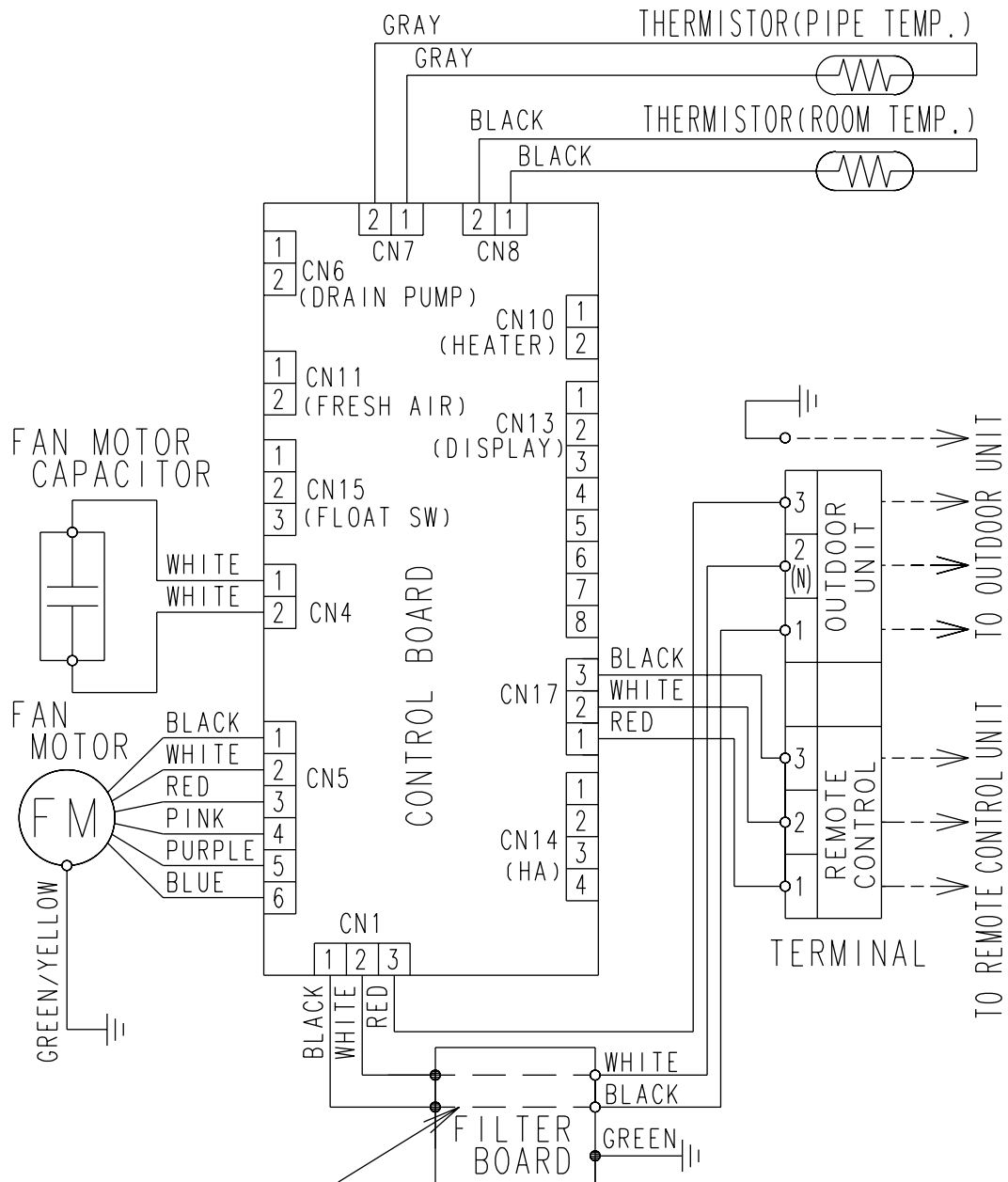
# REFRIGERANT SYSTEM DIAGRAM

## Outdoor unit



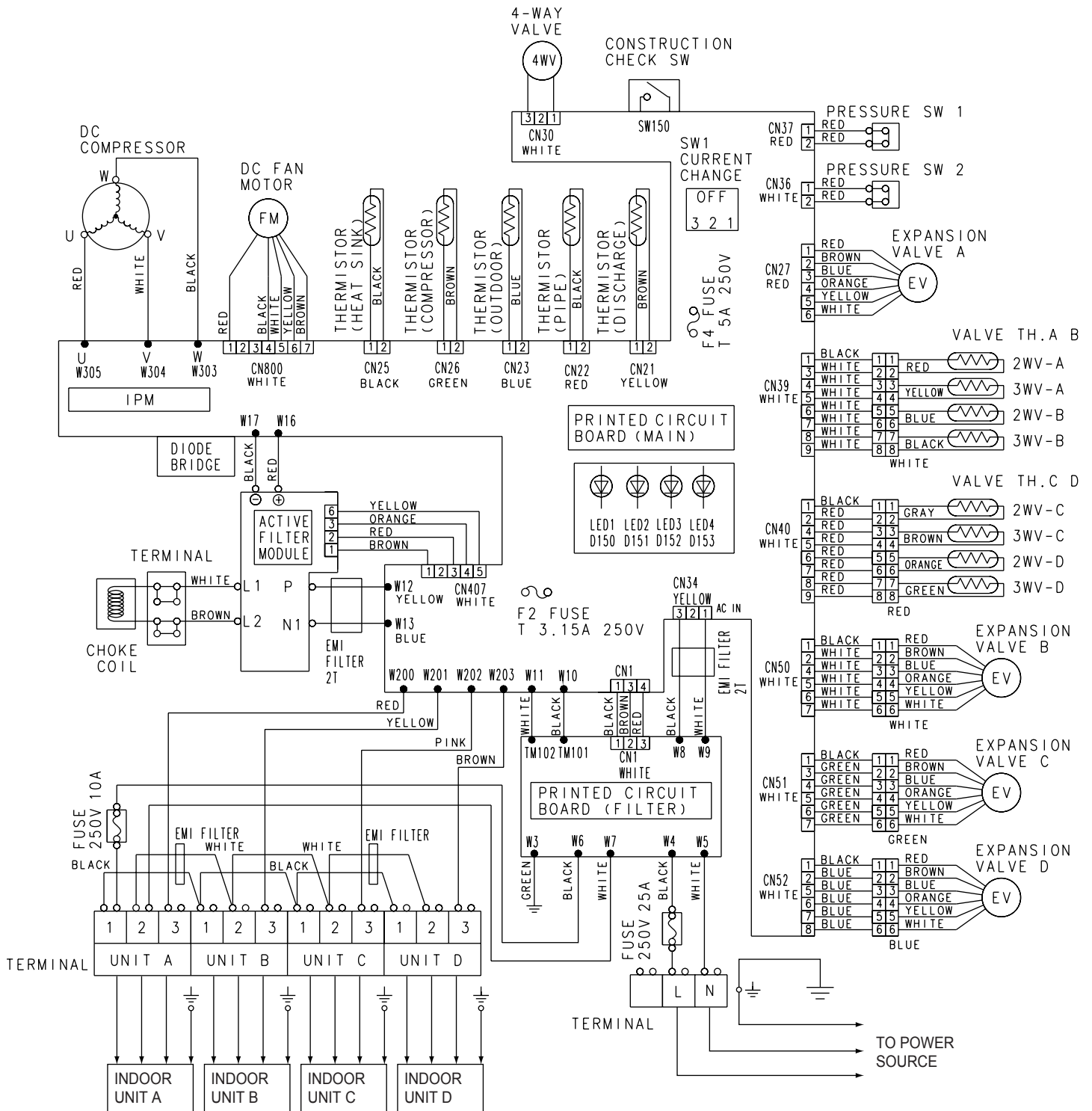
# CIRCUIT DIAGRAM

Models : ARY12LUAD  
 ARY14LUAD  
 ARY18LUAD  
 ARY22LUAD



Use T 3.15A-250V  
 Fuse on F101

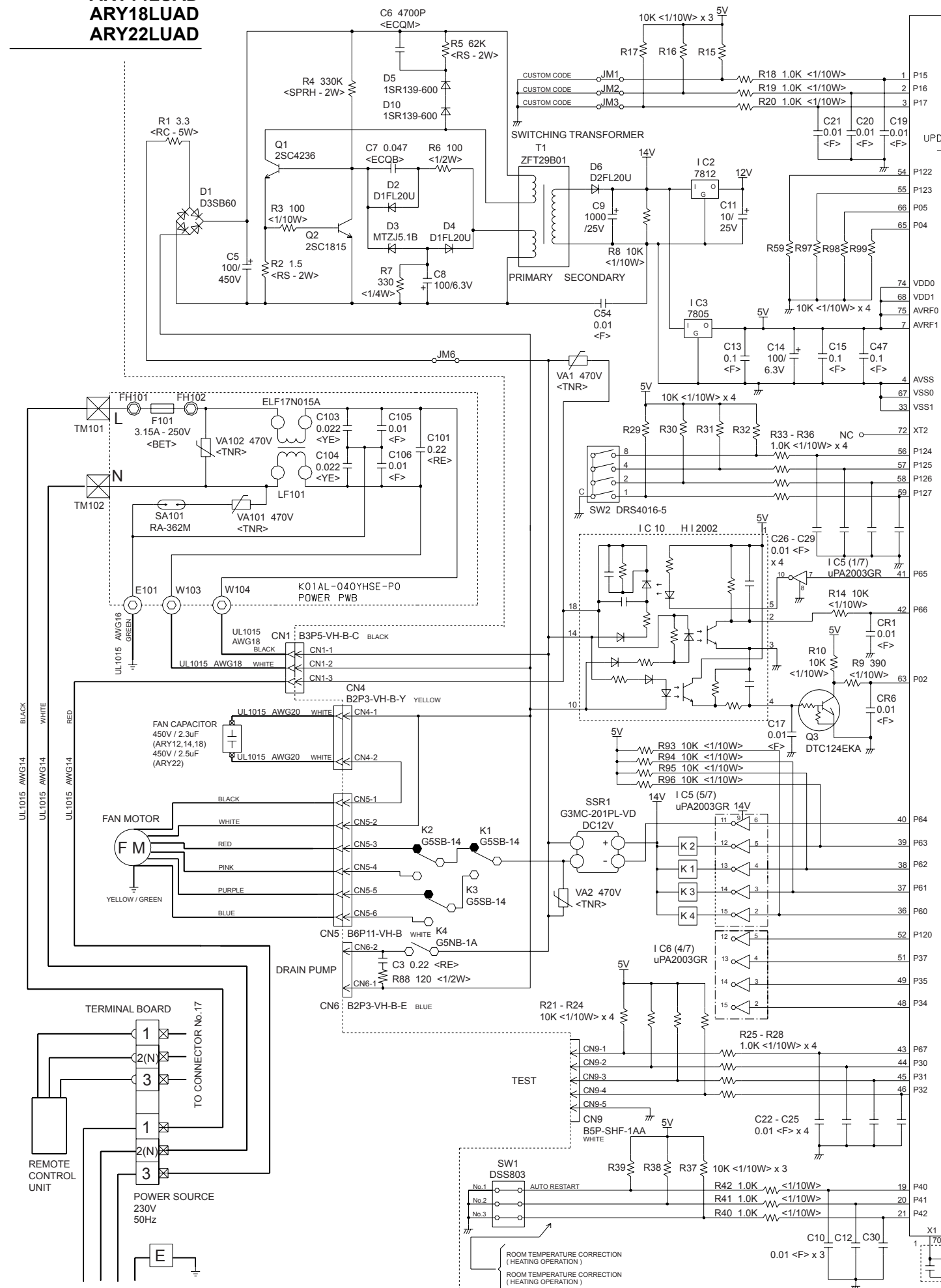
**Model : AOY30LMAW4**





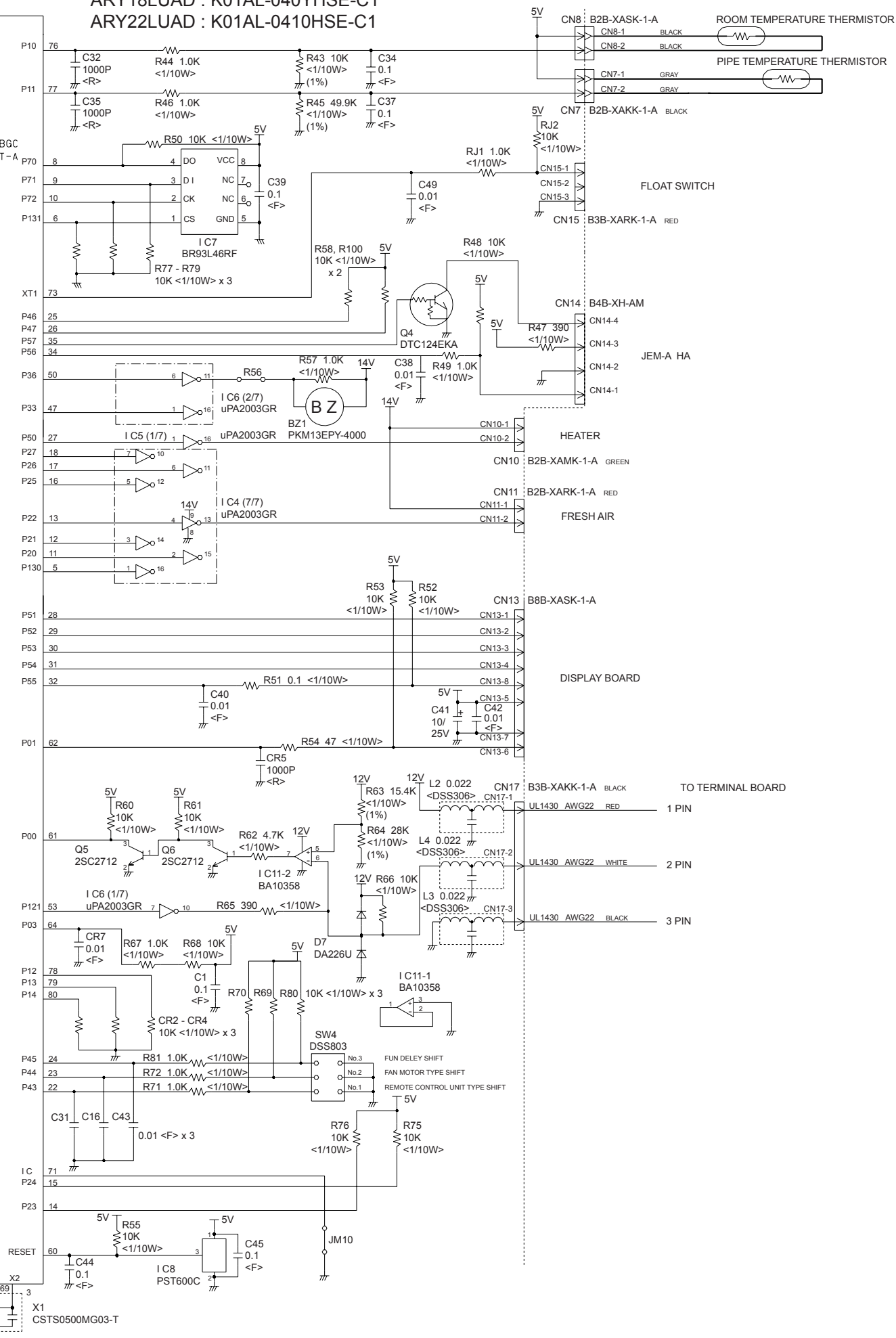
# INDOOR PCB CIRCUIT DIAGRAM

Models : ARY12LUAD  
 ARY14LUAD  
 ARY18LUAD  
 ARY22LUAD



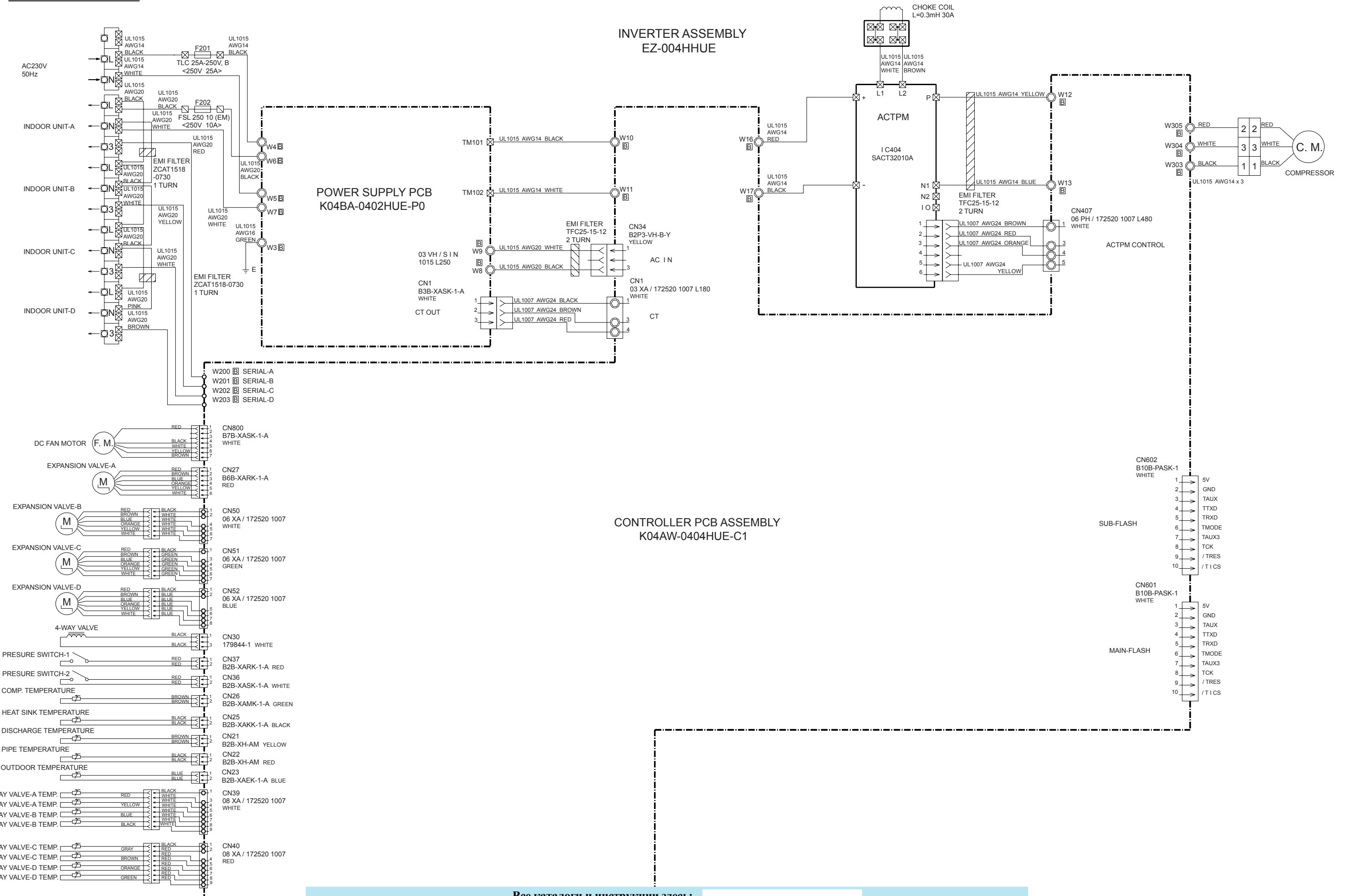
# CONTROLLER PCB ASSEMBLY ( MAIN PCB)

ARY12LUAD : K01AL-0412HSE-C1  
 ARY14LUAD : K01AL-0411HSE-C1  
 ARY18LUAD : K01AL-040YHSE-C1  
 ARY22LUAD : K01AL-0410HSE-C1



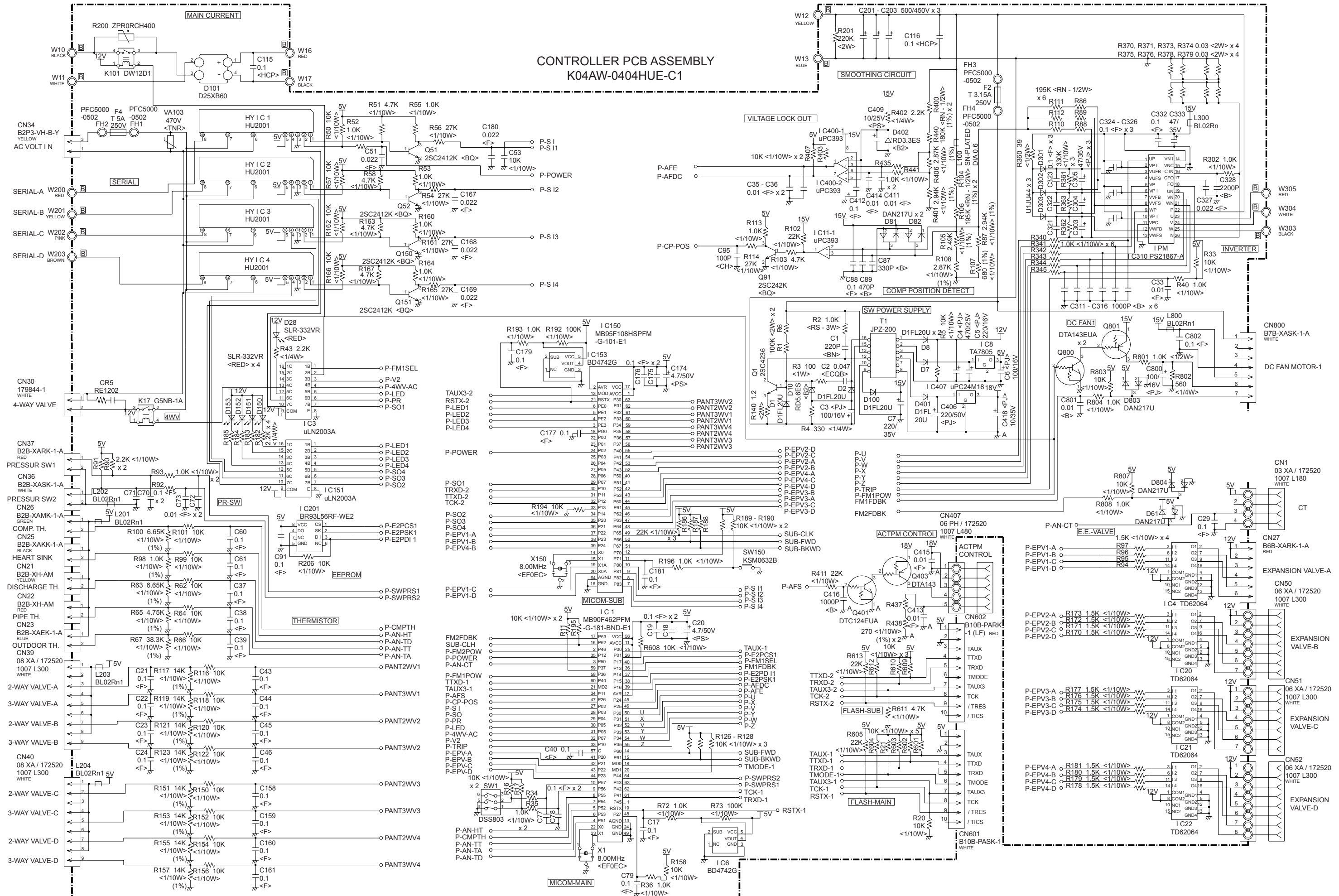
# OUTDOOR PCB CIRCUIT DIAGRAM

Model : AOY30LMAW4

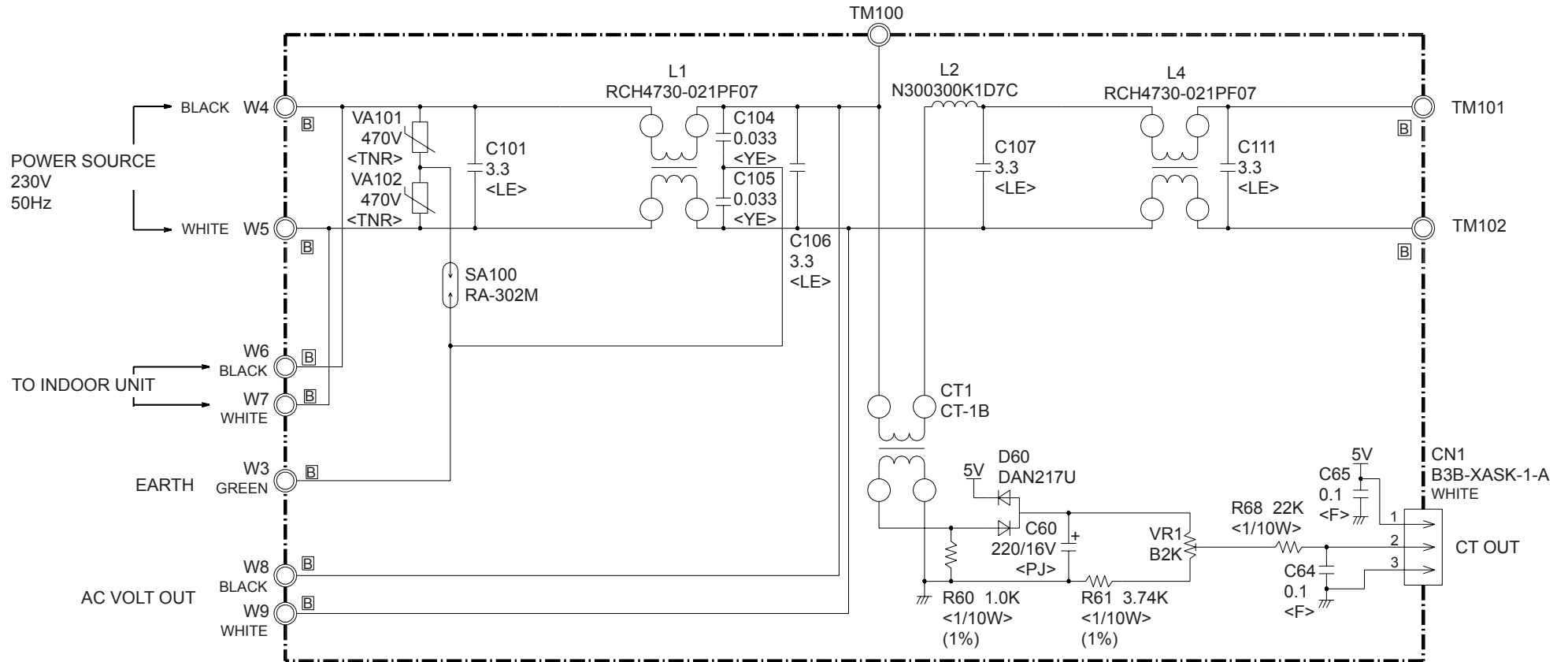


Все каталоги и инструкции здесь:

CONTROLLER PCB ASSEMBLY  
K04AW-0404HUE-C1



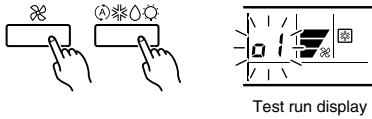
POWER SUPPLY PCB ASSEMBLY  
K04BA-0400HUE-P0





# ERROR CONTENTS

- Stop the air conditioner operation.
- Press the master control button and the fan control button simultaneously for 2 seconds or more to start the test run.



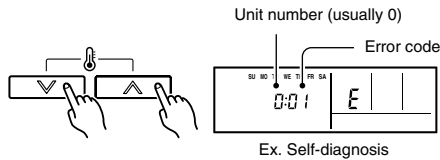
- Press the start/stop button to stop the test run.

## [SELF-DIAGNOSIS]

When the error indication "E:EE" is displayed, follow the following items to perform the self-diagnosis. "E:EE" indicates an error has occurred.

### 1. REMOTE CONTROLLER DISPLAY

- Stop the air conditioner operation.
- Press the set temperature buttons  $\wedge$  /  $\vee$  simultaneously for 5 seconds or more to start the self-diagnosis.  
Refer to the following tables for the description of each error code.



- Press the set temperature buttons  $\wedge$  /  $\vee$  simultaneously for 5 seconds or more to stop the self-diagnosis.

Error code	Error contents
00	Communication error (indoor unit ↔ remote controller)
01	Communication error (indoor unit ↔ outdoor unit)
02	Room temperature sensor open
03	Room temperature sensor short-circuited
04	Indoor heat exchanger temperature sensor open
05	Indoor heat exchanger temperature sensor short-circuited
06	Outdoor heat exchanger temperature sensor open
07	Outdoor heat exchanger temperature sensor short-circuited
08	Power source connection error
09	Float switch operated
0A	Outdoor temperature sensor open
0b	Outdoor temperature sensor short-circuited
0c	Discharge pipe temperature sensor open
0d	Discharge pipe temperature sensor short-circuited
0E	Outdoor high pressure abnormal
0F	Discharge pipe temperature abnormal
11	Model abnormal
12	Indoor fan abnormal
13	Outdoor signal abnormal
14	Outdoor EEPROM abnormal

### 2. OUTDOOR UNIT LEDS

When the outdoor temperature drops, the outdoor units fans may switch to low speed.

**ERROR : 18000 BTU/h model HEAT & COOL MODEL (REVERSE CYCLE) ONLY**

The LED lamps operate as follows according to the error contents.

Error display		
LED1	LED2	Error contents
<p>Quick flash continued</p>	<p>Quick flash continued</p>	Model abnormal or EEPROM abnormal
<p>1 quick flash repeated</p>	<p>Lighting continued</p>	Power source connection error
<p>2 quick flash repeated</p>	<p>Lighting continued</p>	Discharge temperature sensor error
<p>3 quick flash repeated</p>	<p>Lighting continued</p>	Outdoor heat exchanger temperature sensor error
<p>4 quick flash repeated</p>	<p>Lighting continued</p>	Outdoor temperature sensor error
<p>5 quick flash repeated</p>	<p>Lighting continued</p>	Communication signal error
<p>6 quick flash repeated</p>	<p>Lighting continued</p>	Indoor unit error
<p>7 quick flash repeated</p>	<p>Lighting continued</p>	Discharge temperature abnormal
<p>8 quick flash repeated</p>	<p>Lighting continued</p>	High pressure abnormal

When the fault is cleared, the LED lamp goes off.

However, for discharge pipe temperature abnormal and high pressure abnormal, the LED lamp lights continuously for 24 hours, as long as the power is not turned off.

## Outdoor

	LED A	LED B	LED C	LED D
Communication error (indoor unit A to outdoor unit)	● 1 time	—	—	—
Communication error (indoor unit B to outdoor unit)	—	● 1 time	—	—
Communication error (indoor unit C to outdoor unit)	—	—	● 1 time	—
Communication error (indoor unit D to outdoor unit)	—	—	—	● 1 time
Discharge pipe temperature sensor	● 2 times	—	—	—
Outdoor heat exchanger temperature sensor	● 3 times	—	—	—
Outdoor temperature sensor	● 4 times	—	—	—
Outdoor 2way valve(A) temperature sensor	● 5 times	—	—	—
Outdoor 2way valve(B) temperature sensor	—	● 5 times	—	—
Outdoor 2way valve(C) temperature sensor	—	—	● 5 times	—
Outdoor 2way valve(D) temperature sensor	—	—	—	● 5 times
Outdoor 3way valve(A) temperature sensor	● 6 times	—	—	—
Outdoor 3way valve(B) temperature sensor	—	● 6 times	—	—
Outdoor 3way valve(C) temperature sensor	—	—	● 6 times	—
Outdoor 3way valve(D) temperature sensor	—	—	—	● 6 times
Compressor temperature sensor	● 7 times	—	—	—
Heatsink temperature sensor	● 8 times	—	—	—
Pressure switch A abnormal	● 9 times	—	—	—
Pressure switch B abnormal	● 10 times	—	—	—
Indoor unit connection capacity error	● 11 times	—	—	—
IPM error	● 12 times	—	—	—
Compressor later location error	● 13 times	—	—	—
Compressor can not start to operate	● 14 times	—	—	—
Outdoor fan (upper) motor error	● 15 times	—	—	—
Outdoor fan (lower) motor error	● 16 times	—	—	—
Microcomputer error	● 17 times	—	—	—

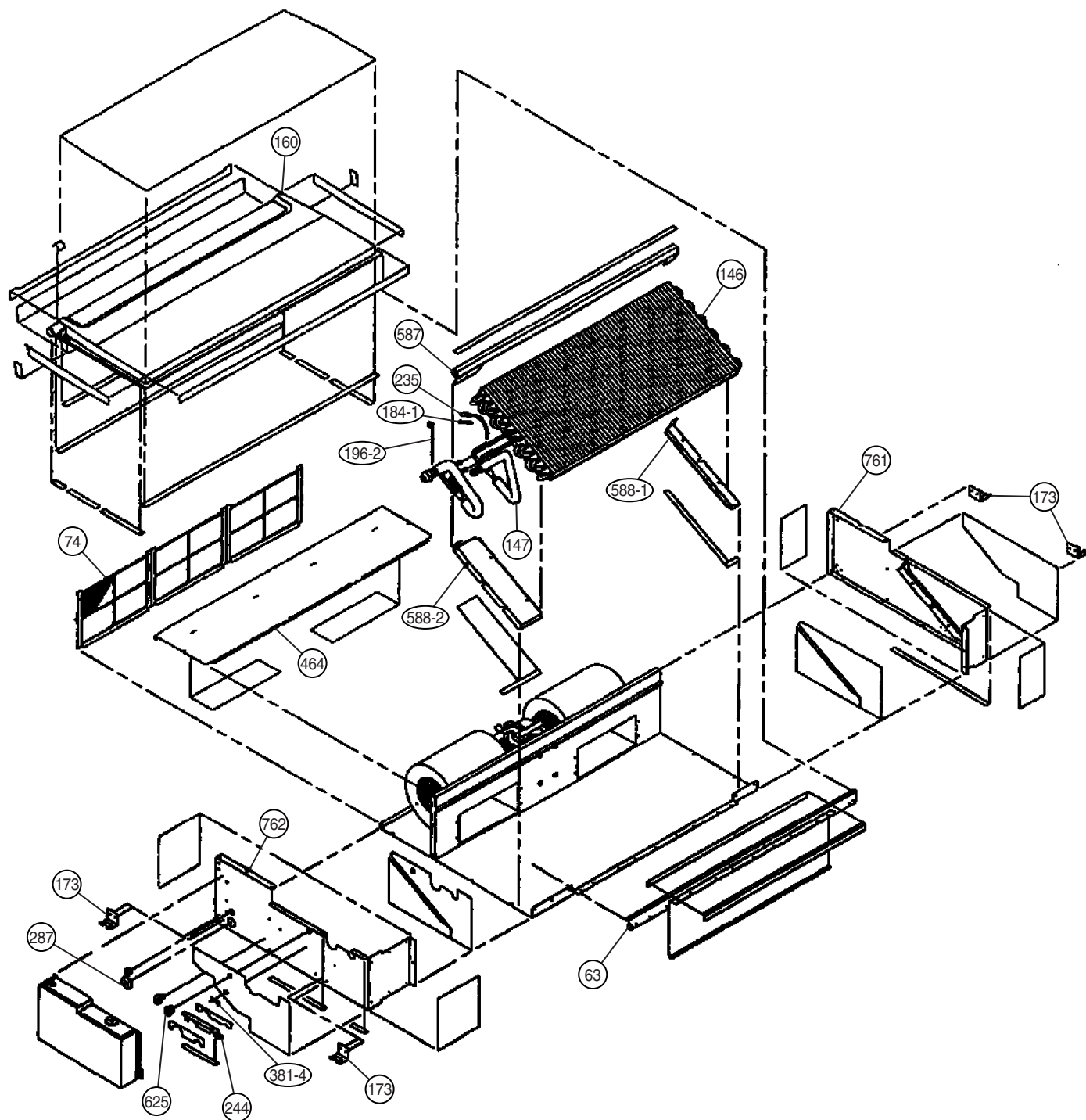
● : Slow flashing    — : Off

## ERROR CONTENTS and TROUBLE SHOOTING (Outdoor unit: AOY/H/T30QMAM4 "Multi controller PCB")

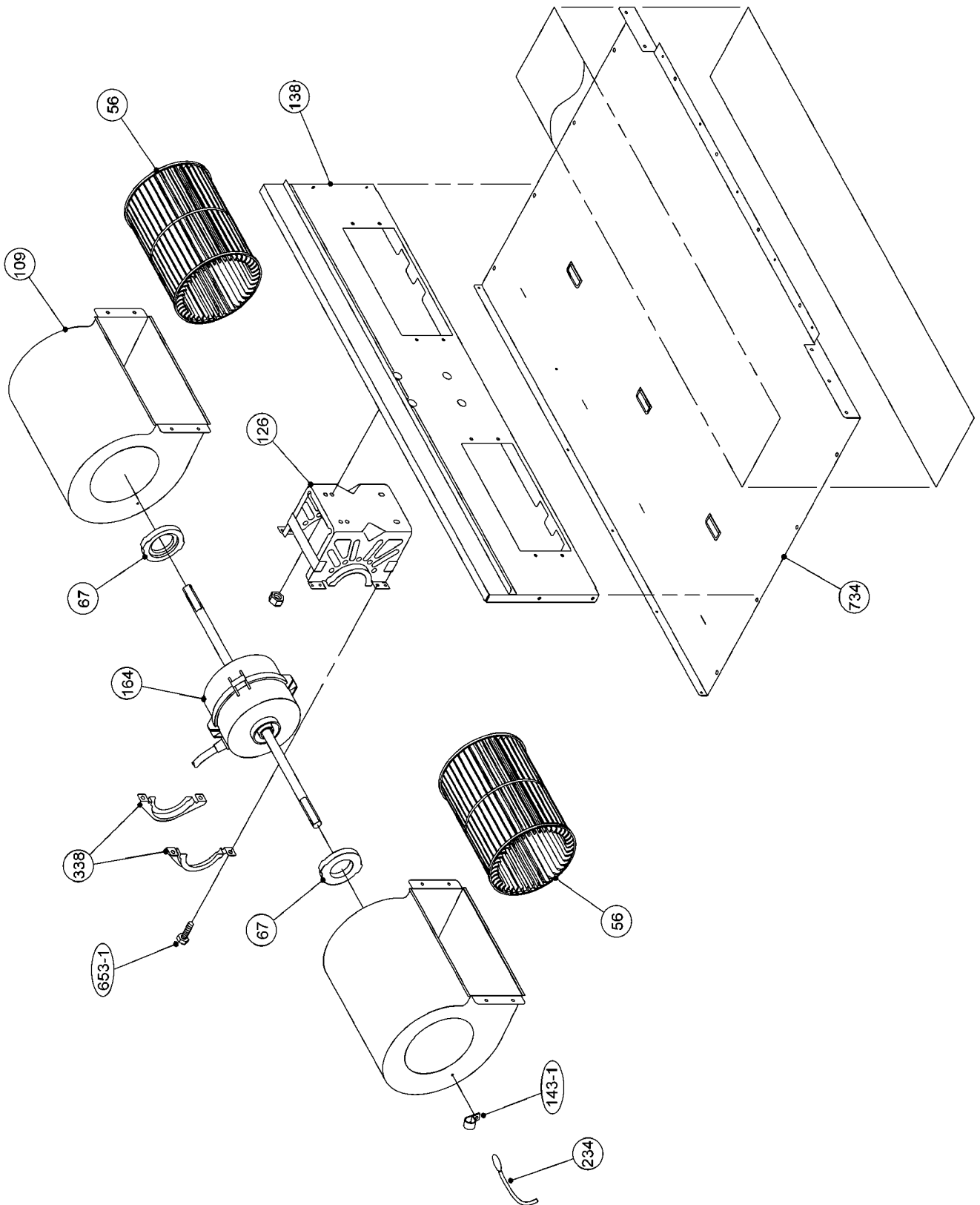
Error contents		Error display		Solution
		LED 1	LED 2	
Fine	Every indoor unit is fine	off	on	
Indoor unit	Serial A abnormal, Out of connection	off	1 time off	Check indoor unit error contents
	Serial B abnormal, Out of connection	off	2 times off	Check indoor unit error contents
	Serial C abnormal, Out of connection	off	3 times off	Check indoor unit error contents
	Serial D abnormal, Out of connection	off	4 times off	Check indoor unit error contents
	All serial (A, B, C, D) abnormal, Out of connection	off	5 times off	Check indoor units error contents
Serial signal	Communication error (Inverter PCB -> Multi controller PCB)	1 time off	off	Check connection, or Change Inverter PCB
Inverter PCB (Outdoor unit)	Communication error (Multi controller PCB -> Inverter PCB)	2 times off	1 time off	Check connection, or Change Multi controller PCB
	Discharge temperature thermister abnormal	2 times off	2 times off	Check connection, or Change it
	Heat exchanger temperature themister abnormal	2 times off	3 times off	Check connection, or Change it
	Outdoor temperature thermister abnormal	2 times off	4 times off	Check connection, or Change it
	Pressure switch A abnormal	2 times off	5 times off	Check connection, or Change it
	2nd time Discharge temperature abnormal (permanent stop)	2 times off	7 times off	Reset the power, or Change Inverter PCB
	Electric current trip (permanent stop)	2 times off	8 times off	reset the power, or change IPM, or Change Inverter PCB
	2nd time CT abnormal (permanent stop)	2 times off	9 times off	Reset the power, or Change Inverter PCB
	Active filter abnormal (permanent stop)	2 times off	10 times off	Reset the power, or Change itself or Change Inverter PCB
	Outdoor fan abnormal (permanent stop)	2 times off	11 times off	Reset the power, or Change Inverter PCB
	Compressor temperature thermister abnormal	2 times off	13 times off	Check connection, or Change it
	Faulty compressor start	2 times off	14 times off	Change Inverter PCB or Compressor
	Cooling high pressure over protection	2 times off	15 times off	Check condenser thermister
2-way valve	2-way valve thermister A abnormal	3 times off	1 time off	Check connection, or Change it
	2-way valve thermister B abnormal	3 times off	2 times off	Check connection, or Change it
	2-way valve thermister C abnormal	3 times off	3 times off	Check connection, or Change it
	2-way valve thermister D abnormal	3 times off	4 times off	Check connection, or Change it
Other	Total indoor units capacity is over outdoor capacity	4 times off	2 times off	Decrease indoor units capacity

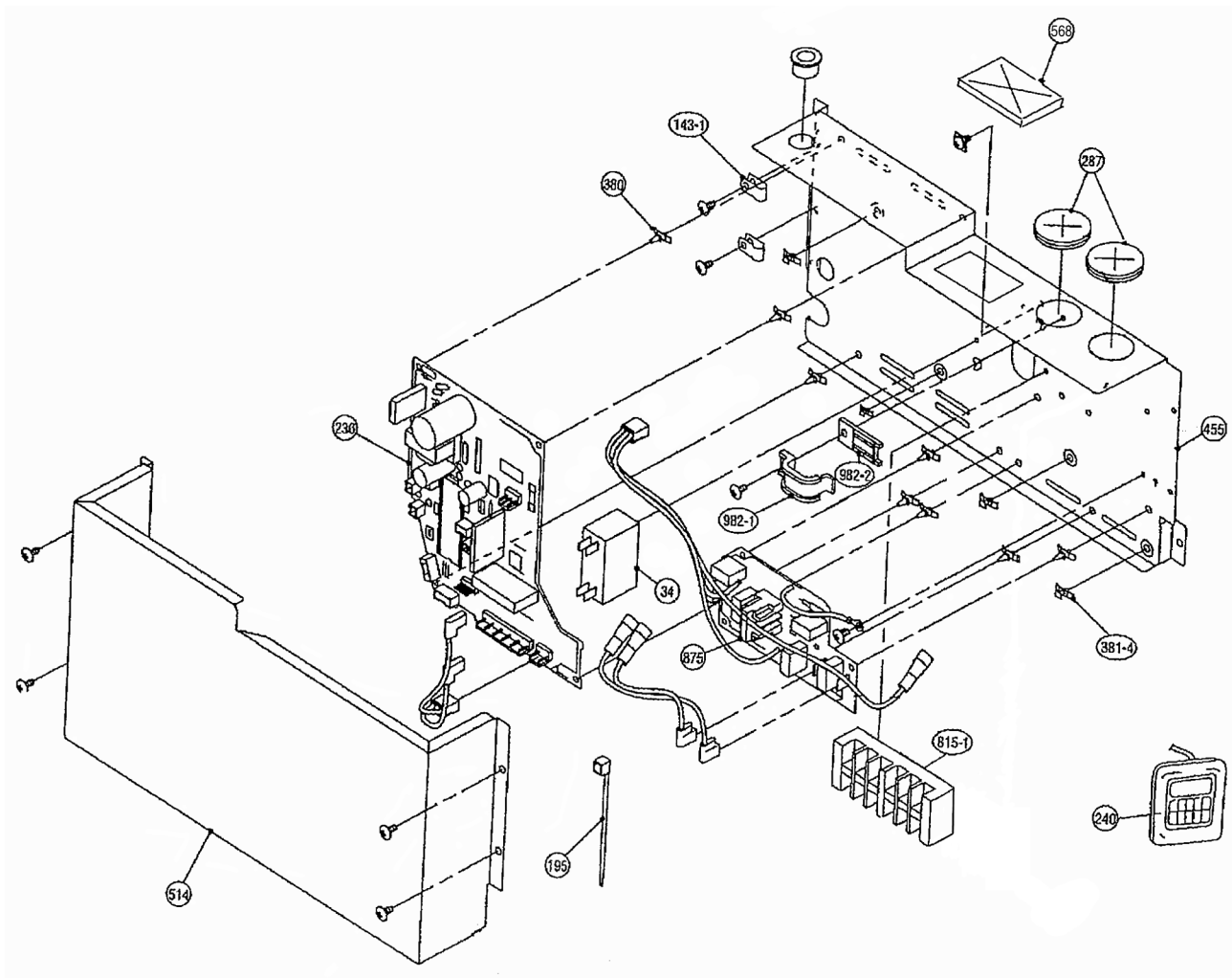
# DISASSEMBLY ILLUSTRATION

Models :  
ARY12LUAD, ARY14LUAD,  
ARY18LUAD, ARY22LUAD

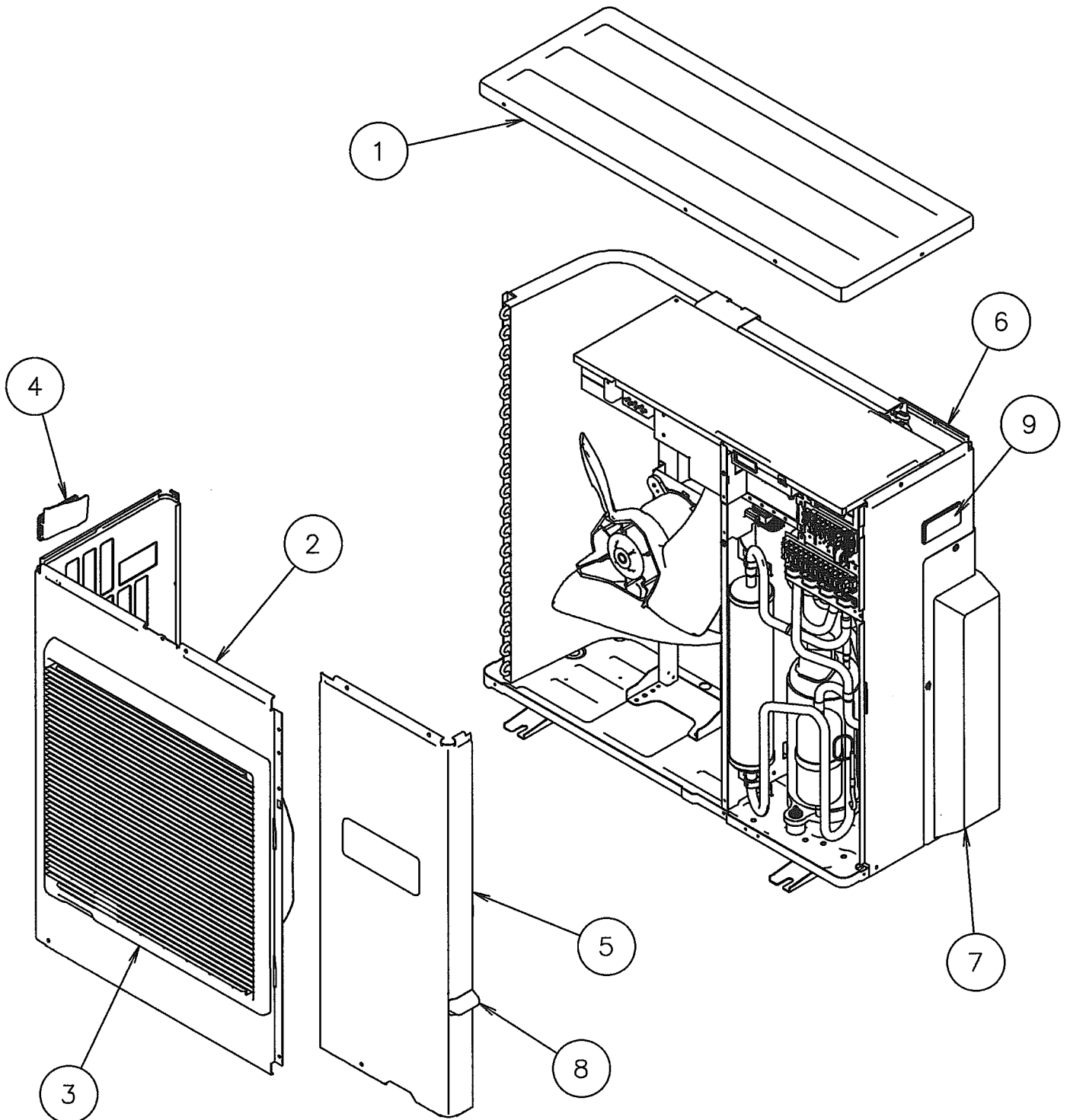




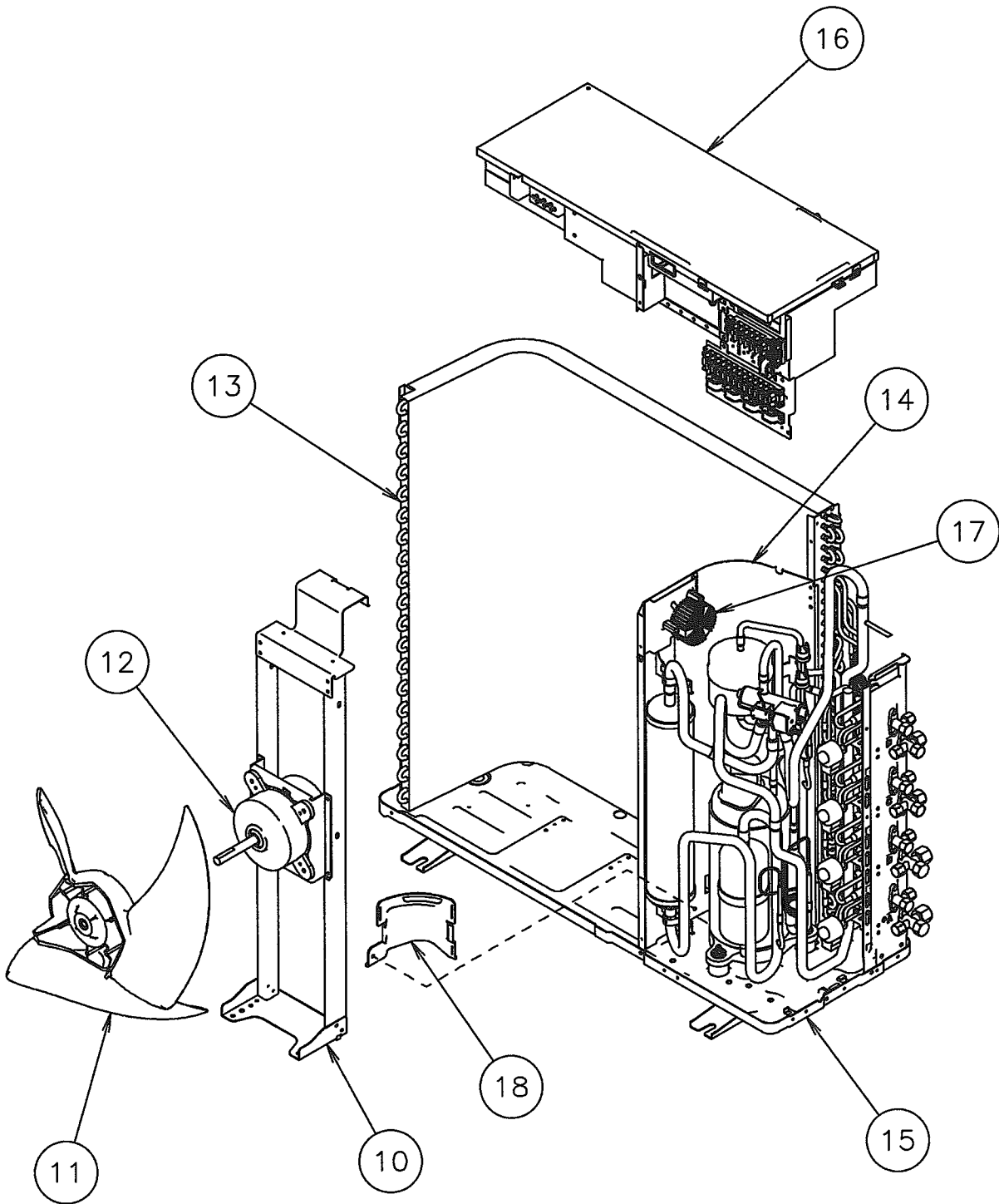




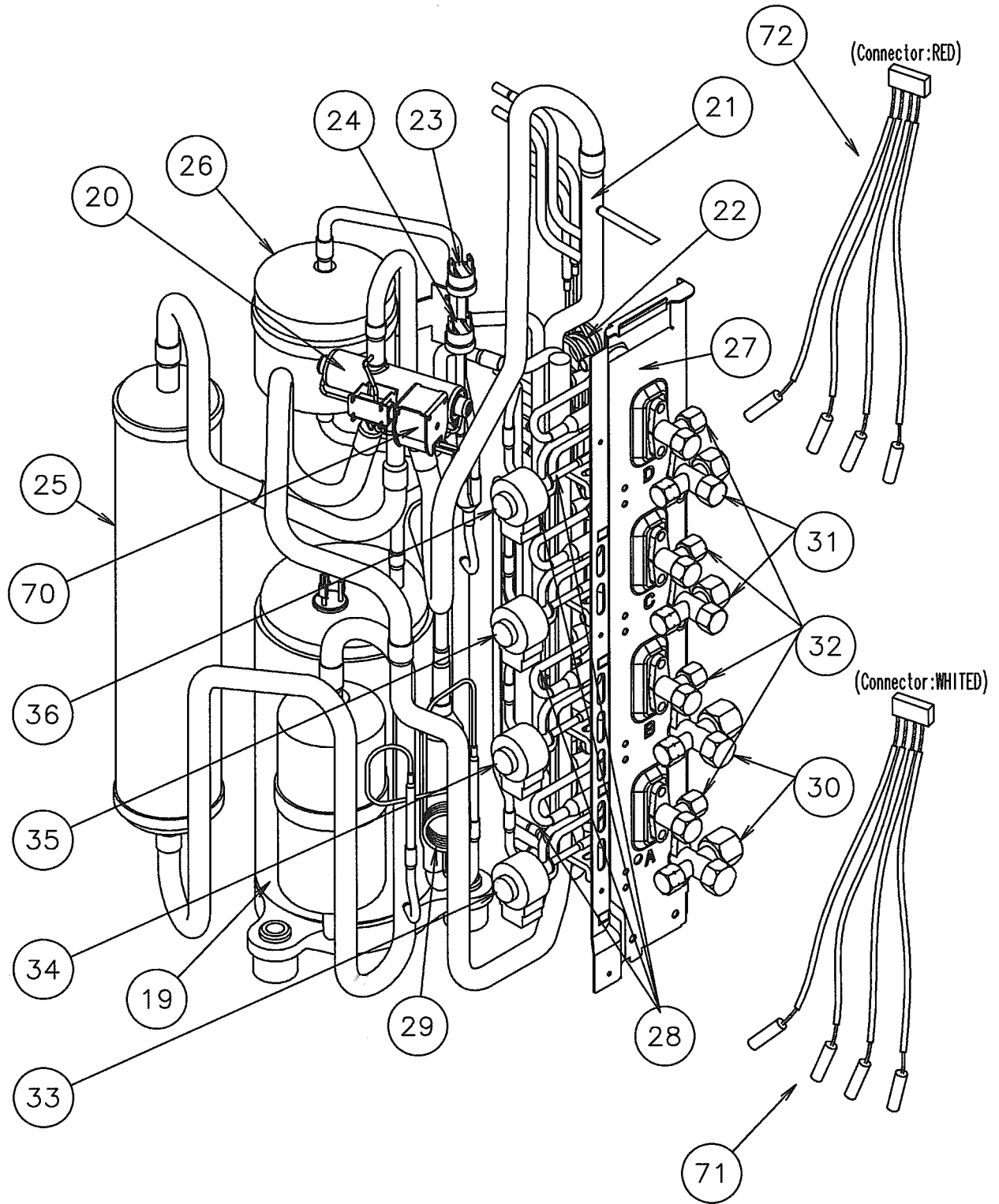
Model : AOY30LMAW4



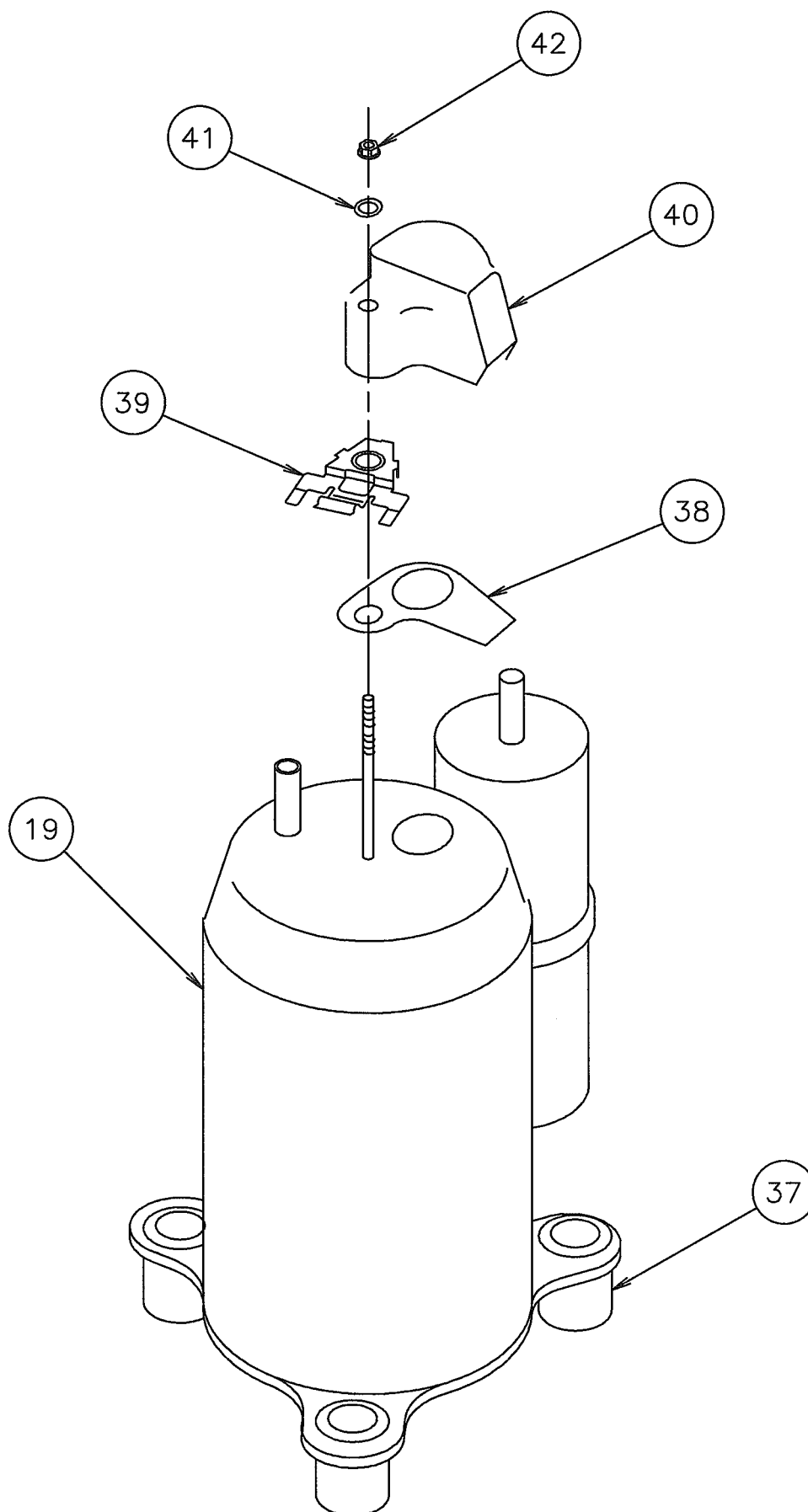
Model : AOY30LMAW4



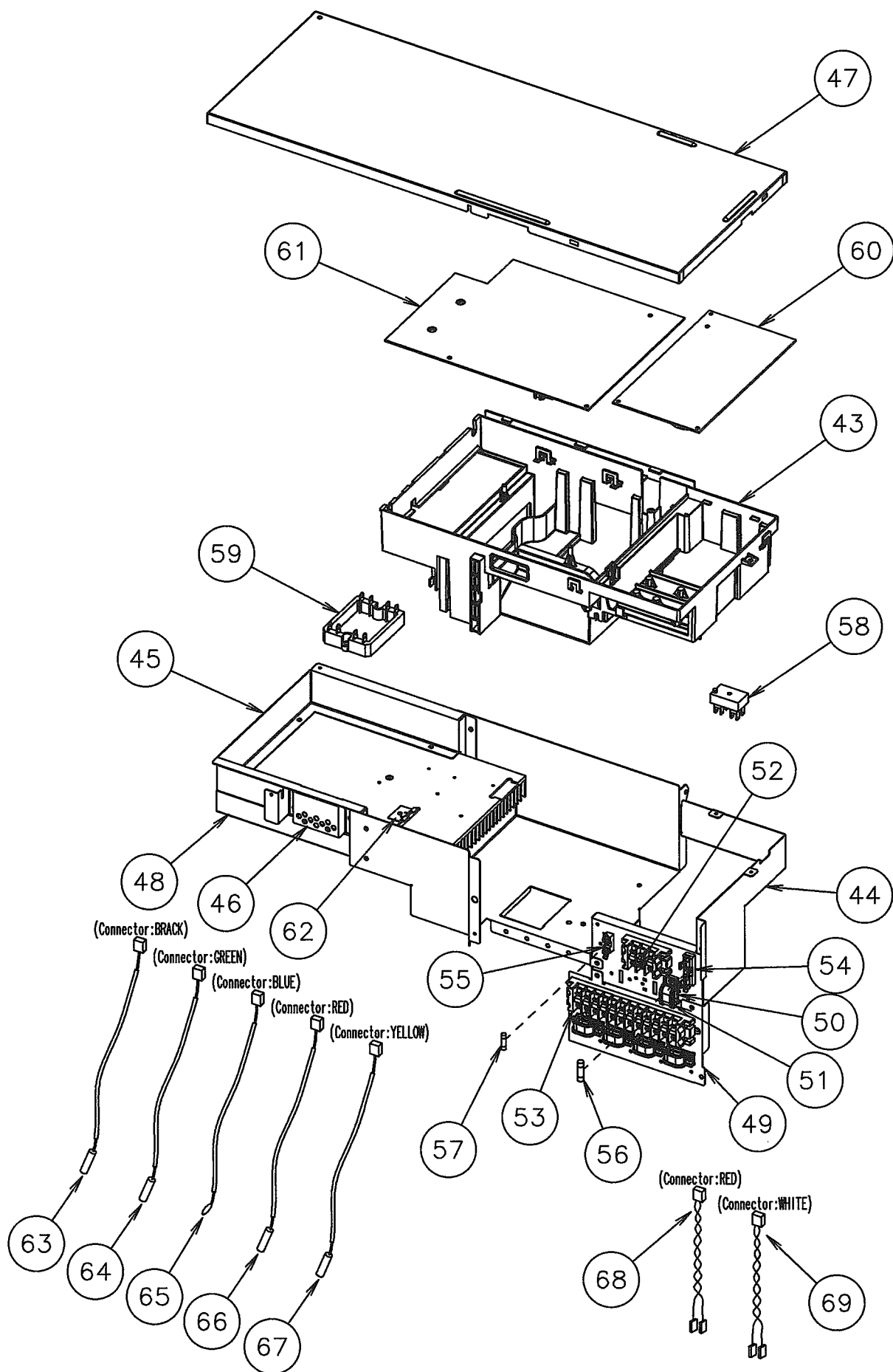
**Model : AOY30LMAW4**



**Model : AOY30LMAW4**



**Model : AOY30LMAW4**



# PARTS LIST

## INDOOR UNIT

Ref. No.	Description	Part No.				Ord. Q'ty
		ARY12LUAD	ARY14LUAD	ARY18LUAD	ARY22LUAD	
34	Capacitor (Fan Motor)	9900270179	9900270179	9900270179	9900270186	
56	Sirocco Fan Assy	9358621004	9358621004	9358621004	9358621004	
63	Front Panel Assy	9363723007	9363723007	9363723007	9363723007	
67	Rubber (Vibration - proof)	313659068604	313659068604	313659068604	313659068604	
74	Air Filter	9366833017	9366833017	9366833017	9366833017	
109	Casing Assy	9363322002	9363322002	9363322002	9363322002	
126	Motor Fixing Table Assy	9358591000	9358591000	9358591000	9358591000	
138	Panel Assy (Motor)	9363401004	9363401004	9363401004	9363401004	
143-1	Clamp NK-3N	313361274700	313361274700	313361274700	313361274700	
146	Evaporator Assy	9373255024	9373255024	9373255017	9373255017	
147	Inlet Pipe (Eva.) Assy	9373034063	9373034063	9373034056	9373034056	
160	Drain Pan Assy	9364502021	9364502021	9364502021	9364502021	
164	Fan Motor Assy	9600778210	9600778210	9600778210	9600778210	
173	Hook Metal	9363195002	9363195002	9363195002	9363195002	
184-1	Thermo. Spring-A	313728262708	313728262708	313728262708	313728262708	
195	Clamp SKB-100	313361275805	313361275805	313361275805	313361275805	
196-2	Clamp SKB-150	313035356905	313035356905	313035356905	313035356905	
234	Thermistor Assy-Room	9703299018	9703299018	9703299018	9703299018	
235	Thermistor Assy-Pipe	9703297090	9703297090	9703297090	9703297090	
236	Controller PCB Assy	9704557988 (K01AL-0412HSE-C1)	9704557971 (K01AL-0411HSE-C1)	9704557957 (K01AL-040YHSE-C1)	9704557964 (K01AL-0410HSE-C1)	
240	Remote Control Unit	9372266014	9372266014	9372266014	9372266014	
244	Cover (Piping)	9363327007	9363327007	9363327007	9363327007	
287	Cap (Power)	9352173011	9352173011	9352173011	9352173011	
338	Motor Fixture	9358594001	9358594001	9358594001	9358594001	
380	Locking Spacer	313209391403	313209391403	313209391403	313209391403	
381-4	Spacer	0600118075	0600118075	0600118075	0600118075	
455	Control Box	9366299004	9366299004	9366299004	9366299004	
464	Cover (Cabinet)	9363400007	9363400007	9363400007	9363400007	
514	Control Box Cover	9363201000	9363201000	9363201000	9363201000	
568	Rubber Bushing	9357376004	9357376004	9357376004	9357376004	
587	Support Plate (Eva.)	9363404005	9363404005	9363404005	9363404005	
588-1	Bracket Eva. R	9363199000	9363199000	9363199000	9363199000	
588-2	Bracket Eva. L	9363198003	9363198003	9363198003	9363198003	
625	Cord Bushing	9359240006	9359240006	9359240006	9359240006	
653-1	CUP SCREW	9385089020	9385089020	9385089020	9385089020	
734	Panel Top	9363504002	9363504002	9363504002	9363504002	
761	Side Panel-R Assy	9363507003	9363507003	9363507003	9363507003	
762	Side Panel-L Assy	9363505009	9363505009	9363505009	9363505009	
815-1	Terminal 7P	9703403019	9703403019	9703403019	9703403019	
875	Filter PCB Assy	9704561251	9704561251	9704561251	9704561251	
982-1	Cord Clamp	9356857009	9356857009	9356857009	9356857009	
982-2	Cord Clamp-B	9356858006	9356858006	9356858006	9356858006	

When you order parts, please make a photocopy of this page and fill the number of the part

Все каталоги и инструкции здесь:



## OUTDOOR UNIT

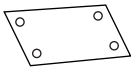








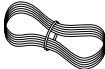



Ref. No.	Description	Part No.	Ord. Q'ty	Ref. No.	Description	Part No.	Ord. Q'ty
		AOY30LMAW4				AOY30LMAW4	
1	Top Panel Sa	9374417025		41	Washer (Rubber)	9358078006	
2	Front Panel M Ptd	9374094066		42	Frang Nut	9358079003	
3	Fan Guard	9374330010		43	Inverter Box A	9374603015	
4	Grip Side	9374173013		44	Inverter Box B As	9374625017	
5	Service Panel M Ptd	9374093069		45	Inverter Box C	9374605019	
6	Right Panel M Ptd	9374599028		46	Inverter Box Duct	9374609017	
7	Valve Cover Sa	9374827015		47	Inverter Box Cover	9374608010	
8	Grip Service	9374171019		48	Heat Sink A	9374607013	
9	Grip	9374172016		49	Inverter Box D	9374606016	
10	Motor Bracket Sub Assy	9374418053		50	Clamp (Cord) C	9359677000	
11	Propeller Fan Assy	9366378020		51	Clamp (Cord)	9356857009	
12	Motor. DC Brushless	9601882015		52	Terminal (3P)	9900203016	
13	Condenser A Assy	9374433056		53	Terminal (12P)	9358660164	
14	Sepa Wall As S	9374629022		54	Fuse Holder (Big)	0501454012	
15	Base As Ptd	9374166084		55	Fuse Holder (Small)	0501456016	
16	Inverter Assy	9705824010		56	Fuse (Big)	0600086039	
17	Coil. Choke	9703458019		57	Fuse (Small)	0600376116	
18	Cap Foot	9374345014		58	Terminal	9701971015	
19	Compressor Sub Assy	9374423064		59	Actpm	9703457012	
20	4-Way Valve Assy	9374425044		60	Pwb Assy	9705647039	
21	Inlet Pipe (Cond) A Assy	9373461067		61	Pwb Assy	9705642058	
22	Outlet Pipe (Cond) A Assy	9374266067		62	Holder (Thermo)	9372797013	
23	Pressure Switch A Assy	9367726028		63	Heat Sink Thermistor	9900311018	
24	Pressure Switch B Assy	9367727025		64	Compressor Temp Thermistor	9900156022	
25	Accumulator Sub Assy	9374426072		65	Thermistor (Outdoor Temp)	9703516078	
26	Receiver Tank Sub Assy	9373426028		66	Heat Exchanger Thermistor	9704220059	
27	Valve Plate A As Ptd	9374628025		67	Discharg Temp Thermistor	9704219114	
28	Expansion Valve Assy	9370947106		68	Wire (Pressure Sw)(Red)	9367595037	
29	Capillary Assy	9372197370		69	Wire (Pressure Sw)(White)	9367595044	
30	3-Way Valve Assy (1/2")	9372205051		70	Solenoid	9900165055	
31	3-Way Valve Assy (3/8")	9372205044		71	Thermistor (Pipe)(White)	9900322014	
32	2-Way Valve Assy	9372204054		72	Thermistor (Pipe)(Red)	9900289010	
33	Coil (Expansion Valve)(A=Red)	9900057084					
34	Coil (Expansion Valve)(B=White)	9900057053					
35	Coil (Expansion Valve)(C=Green)	9900057060					
36	Coil (Expansion Valve)(D=Blue)	9900057077					
37	Rubber Seat (For Comp)	9358080009					
38	Gasket	9370290004					
39	Holder	9372066010					
40	Terminal Cover (Comp)	9370289008					

When you order parts, please make a photocopy of this page and fill the number of the part

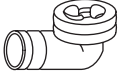


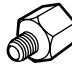


Все каталоги и инструкции здесь:

# STANDARD ACCESSORIES

## INDOOR UNIT ACCESSORIES

Name and Shape	Q'ty	Application	Part No.
Installation template 	1	For positioning the indoor unit	9364225005
Hanger 	4	For suspending the indoor unit from ceiling	9363195002
Tapping screw (φ 4 x 10) 	8	For installing the hanger	301171164104
Special nut A (large flange) 	4	For suspending the indoor unit from ceiling	313005446653
Special nut B (small flange) 	4		313005446759
Coupler heat insulation (large) 	1	For indoor side pipe joint (large pipe)	9350716029
Coupler heat insulation (small) 	1	For indoor side pipe joint (small pipe)	9352766015
Binder 	(Small) 1	For remote controller and remote controller cord binding	313361275805
	(Large) 4	For fixing the coupler heat insulation	312300787605
Remote controller 	1	Heat & Cooling model	9372266014
Remote controller cord 	1	For connecting the remote controller	9372714010
Tapping screw (φ 4 x 16) 	2	For installing the remote controller	0700181108
Filter 	3	12000, 14000, and 18000 BTU/h models	9366833017
Drain hose insulation 	1	Insulates the drain hose and vinyl hose connection	313806217708

## OUTDOOR UNIT ACCESSORIES

Name and Shape	Q'ty	Application	Name and Shape	Q'ty	Application
Drain pipe 	1	For outdoor unit drain piping work (May not be supplied, depending on the model.)	Adapter E (1/4"→3/8") 6.35mm → 9.52mm 	1	For connecting a pipe with different diameter to the outdoor unit.
Drain cap 	2		Adapter G (1/2"→5/8") 12.7mm → 15.88mm 	1	
Putty 	1		Adapter D (1/2"→3/8") 12.7mm → 9.52mm 	2	



**Большая библиотека технической документации**

<https://splitsystema48.ru/instrukcii-po-ekspluatacii-kondicionerov.html>

**каталоги, инструкции, сервисные мануалы, схемы.**